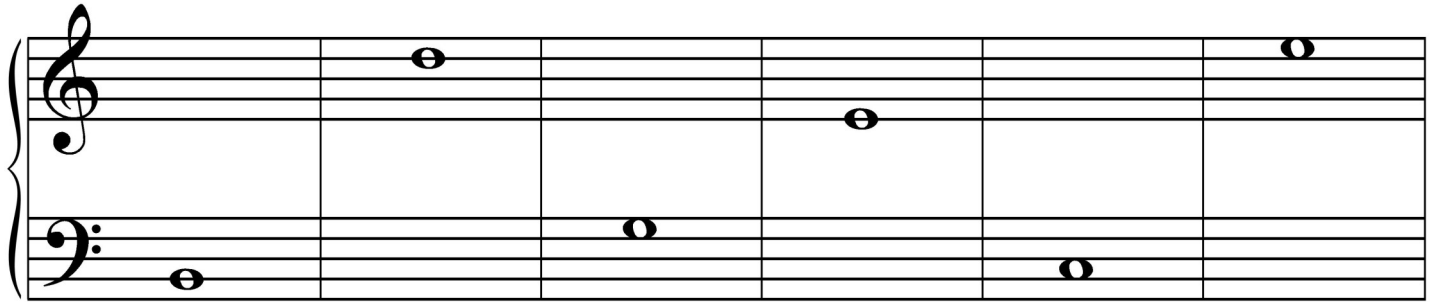
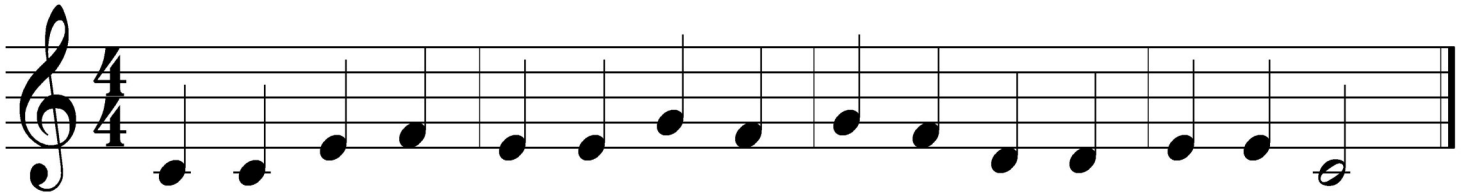


Grade One Worksheet 1

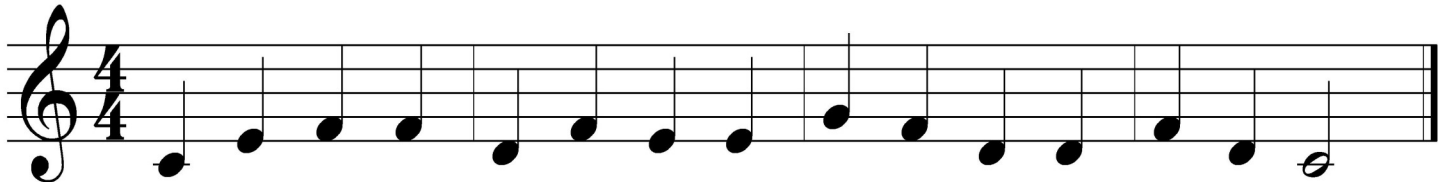
1. Write the names of the notes on the lines below the staff.



2. Circle the notes that repeat.



3. Circle the intervals of a 2nd (step).



4. Draw the following notes.

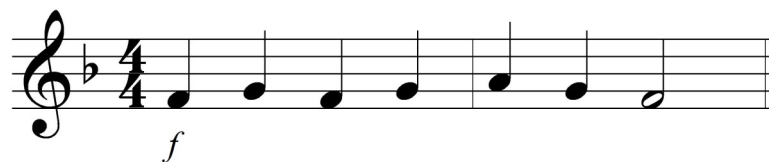
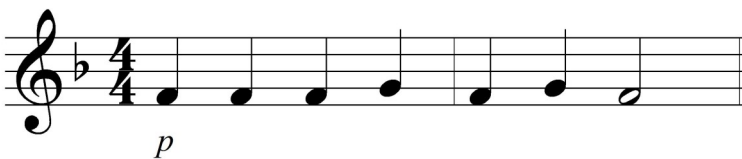
 Quarter note

 whole note

 half rest

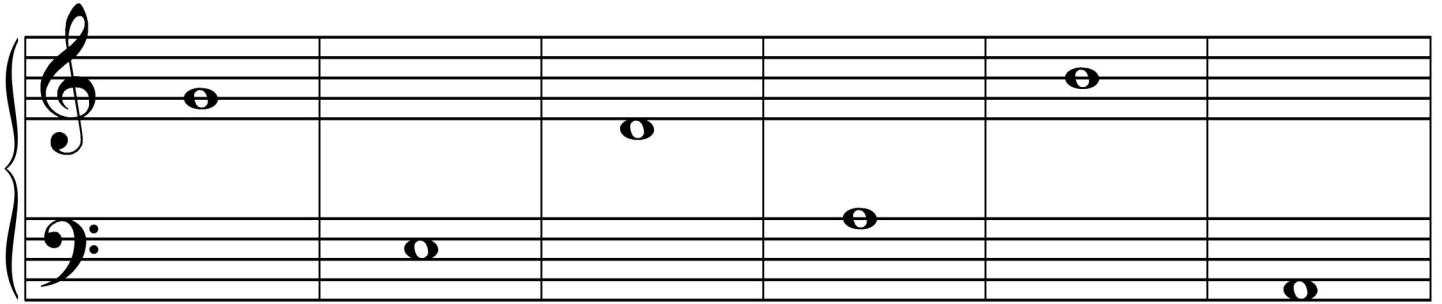
 dotted half note

5. Circle the music example that should be played softly.



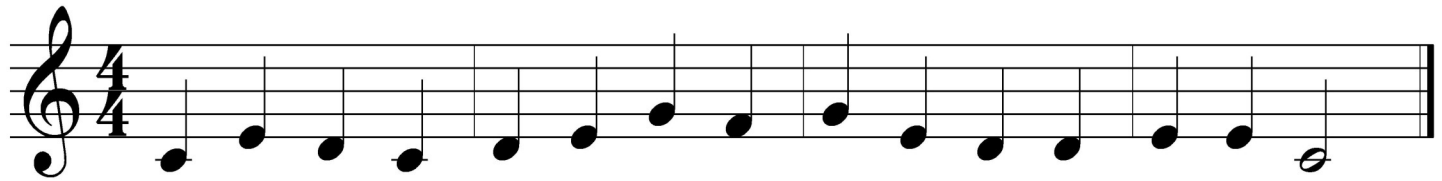
Grade One Worksheet 2

1. Write the names of the notes on the lines below the staff.



A musical staff with a treble clef on the top line and a bass clef on the bottom line. The treble clef staff contains three whole notes: G4 (first line), A4 (second line), and B4 (third space). The bass clef staff contains three whole notes: F3 (second space), E3 (first space), and D3 (first line).

2. Circle the intervals of a 3rd (skip).

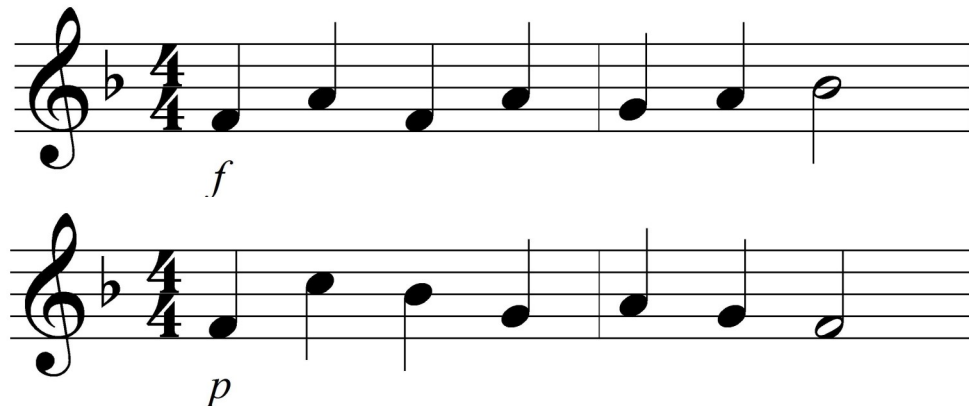


A musical staff in 4/4 time with a treble clef. The notes are: G4 (quarter), A4 (quarter), B4 (quarter), C5 (quarter), D5 (quarter), E5 (quarter), F5 (quarter), G5 (quarter), A5 (quarter), B5 (quarter), C6 (quarter), D6 (quarter), E6 (quarter), F6 (quarter), G6 (quarter), A6 (quarter), B6 (quarter), C7 (quarter).

3. Draw the following notes.

_____ dotted half note _____ Half rest _____ Quarter note _____ whole rest

4. Circle the music example that should be played loudly.



Two musical staves in 4/4 time with a treble clef and a key signature of one flat (Bb). The first staff has a dynamic marking of *f* (forte) and contains the notes: G4 (quarter), A4 (quarter), Bb4 (quarter), C5 (quarter), D5 (quarter), E5 (quarter), F5 (quarter), G5 (quarter). The second staff has a dynamic marking of *p* (piano) and contains the notes: G4 (quarter), A4 (quarter), Bb4 (quarter), C5 (quarter), D5 (quarter), E5 (quarter), F5 (quarter), G5 (quarter).